



# 2017 ProVM Equipment Product Offer

March 20, 2017

# Contact Us

To place an order call, fax or e-mail one of our Customer Service Specialists

Phone +1 866 572 8240

Fax +1 866 572 8240

[ESCustomerService@univar.com](mailto:ESCustomerService@univar.com)

## SALES REPRESENTATIVES

For technical information on equipment, please contact Ron Standish or your area sales representative.

### Ron Standish

Equipment Specialist  
Canada

+1 403 660 4909

[Ron.Standish@univar.com](mailto:Ron.Standish@univar.com)

### Aaron Foster

Territory Manager  
Alberta & British Columbia  
+1 780 870 1078

[Aaron.Foster@univar.com](mailto:Aaron.Foster@univar.com)

### Jason Theroux

Territory Manager  
Manitoba & Saskatchewan  
+1 204 396 1361

[Jason.Theroux@univar.com](mailto:Jason.Theroux@univar.com)

### Chad Horton

Territory Manager  
Eastern Canada  
+1 519 939 2692

[Chad.Horton@univar.com](mailto:Chad.Horton@univar.com)

# Our Locations

## HUB DISTRIBUTION CENTERS

To find a map to any of the distribution centers, click on the blue hyperlinks powered by Google Maps.

Airdrie, Alberta

[Fort Storage](#)

35 East Lake Circle NE  
Airdrie AB T4A 2J9  
+1 403 948 9777

Winnipeg, Manitoba

[Fort Storage](#)

169 Lowson Crescent  
Winnipeg MB R3P 1A6  
+1 204 488 9774

Tillsonburg, Ontario

[Future Transfer](#)

291 Tillson Avenue  
Tillsonburg ON N4G 5X2  
+1 519 826 9116

## SATELLITE DISTRIBUTION CENTERS

Abbotsford, British Columbia

[Univar Abbotsford](#)

3256 McCallum Road  
Abbotsford BC V2T 6Z5  
+1 604 859 4919

Coaldale, Alberta

[Univar Coaldale](#)

1204 18th Avenue  
Coaldale AB T0K 0T0  
+1 403 345 2167

Saskatoon, Saskatchewan

[Fort Storage](#)

4115 Thatcher Avenue  
Saskatoon SK S7R 0T3  
+1 306 653 8101

Regina, Saskatchewan

[Univar Regina](#)

284 Mill Street  
Regina SK S4P 3Y3  
+1 306 721 4911

Brandon, Manitoba

[Univar Brandon](#)

Unit 1, 1875 Middleton Avenue  
Brandon MB R7C 1A7  
+1 204 571 5950

Cookshire, Quebec

[Standish Distribution](#)

1025 Pope Street  
Cookshire QC J0B 1M0  
+1 819 875 3387

# Table of Contents

<b>Backpack Sprayers</b>	
Chapin	4
YardTender	4
YardTender SP189 Parts List	23
<b>EZ-Ject</b>	22
<b>Hose</b>	
Kuri Tec	10
Supaslip	10
<b>Hose Reels</b>	
Cox	11
Intelli-Spray	10
Hannay	11
HR	11
<b>Nozzles</b>	
Boom Buster	12-14
Hypro	15
<b>Pumps</b>	
Ace	15
Delavan	15
Flojet	16
Hypro	16-17
PRO-TEC	17
<b>Spraying Systems</b>	
Boom Buster Rite-O-Way Special Sprayer	5
Enduraplas Sprayers	5
Intelli-Spray	6
PRO-TEC Systems Sprayers	7-8
Radiarc Sprayers	6
Workhorse Sprayers	9
Wick Applicator	22
<b>Spray Guns</b>	
GunJet	19
Hypro	20
Intelli-Spray	20
TeeJet	20
<b>Surge Buster</b>	22
<b>TeeJet Controller</b>	18
<b>Valves</b>	
DirectoValve	21
<b>Wind Meter</b>	22

### Chapin 1 Gallon Pro Hand Held Sprayer

- 3 stage filtration system
- 16" wand with fan, cone and adjustable brass nozzles
- 16" clear reinforced hose
- Viton seals



Model #	Tank Size	Price
26011XP	1G / 3.78L	\$57.90

### Chapin 4 Gallon Pro Backpack

- Jet Clean self cleaning pump with 3 stage filtration
- Heavy padded shoulder straps with back pad
- Dual displacement pump
- In-tank removable filter
- 20" wand with fan, cone and adjustable brass nozzles
- 48" clear reinforced hose
- Viton seals



Model #	Tank Size	Qty	Price
63900	4G / 15.12L	1	\$185.00
63900	4G / 15.12L	3 or more	\$175.00

### Chapin 4 Gallon 20V Pro Backpack

- Up to 50 gallons per charge
- Heavy padded shoulder strap
- In-tank removable filter
- 20" wand with fan, cone and adjustable brass nozzles
- 48" clear reinforced hose
- Viton seals



Model #	Tank Size	Price
63985	4G / 15.12L	\$298.30

### YardTender 4 Gallon Backpack

- Powerful internal piston pump, max 168psi
- Heavy padded shoulder strap
- Built in lid check valve to prevent spills
- 20" wand with adjustable brass nozzle
- 55" rubber hose
- Modified spray pistol with built-in filter and grip
- Viton seals



Model #	Tank Size	QTY	Price
SP189	4G / 15.12L	1	\$245.00
SP189	4G / 15.12L	3 or more	\$235.00

Univar Environmental Sciences recommends the use of a Teejet 1502 (\$15.90) or TeeJet 1503 (\$15.90) nozzle for Garlon RTU applications. If using an aftermarket nozzle with a Chapin sprayer, equip a TeeJet 4193A-5-50 check valve (\$5.80) to reduce chemical dripping and waste.

### Boom Buster Rite-O-Way Special

Specially designed package consists of 3 Boom Buster nozzles positioned on an electrically actuated arm mounted on the front bumper or deck of the spray vehicle. Each individually controlled nozzle will spray a different band width, yet all nozzles apply the same amount of spray per hectare at the same speed and pressure. All sprayer functions are easily controlled from the in-cab console.

#### Advantages

- One person spray crew
- No slowing down because of bouncing booms or obstructions
- Three pre-adjusted swath widths
- Requires 30 to 40 PSI to operate
- Adaptable for use with direct chemical injection systems
- Easy to install and maintain

#### Suggested Nozzle Combinations

- 120-5R (5'), 180-10R (10'), 265R (19.5') - 21 GPA @ 10MPH & 40 PSI
- 260-11R (11'), 375R (21.5'), 437R (29.5') - 38 GPA @ 10MPH & 40 PSI
- 260-5R (5'), 370R (10'), 500R (20') - 83 GPA @ 10MPH & 40 PSI



Model #	Price
ROW 120/180/265	\$4,870.00
ROW 260/375/437	\$4,870.00
ROW 260/370/500	\$4,870.00

### Enduraplas Field Boss 365

- Honda GX120 4 HP motor
- Maximum pressure of 57 PSI
- Maximum flow rate of 22.5 GPM
- 50' hose length
- 27' vertical spray distance, 35' horizontal spray distance
- Built in sight glass allows you to view liquid level from your seat
- Spring loader control arm allows the operator to manage the boom options from the seat



Model #	Size	Price
SFB060FG225GH	60G / 227L	\$2,970.00
SFB100FG225GH	100G / 378L	\$3,105.00

### Enduraplas Tree Sprayer

- Honda GX390 13 HP motor
- Maximum pressure of 725 PSI
- Maximum flow rate of 18 GPM
- 100' hose length
- 50' vertical spray distance, 55' horizontal spray distance
- Easily drainable with built in sump
- Adjustable spraying pattern



Model #	Size	Price
SM200FG18GH	200G / 756L	\$7,519.50
SM250FG18GH	250G / 945L	\$7,620.75
SM300FG18GH	300G / 1,134L	\$7,951.50
SM400FG18GH	400G / 1,512L	\$8,086.50

Call for complete Enduraplas listing

### Intelli-Spray 9SDE Single Reel Sprayer

- Honda GX270U 9 HP, electric start motor
- 12V battery charged by motor
- Bertolini PA530 triple diaphragm pump, direct coupled
- Maximum pressure of 580 PSI
- Maximum flow rate of 14.3 GPM
- Single reel sprayer with remote control retraction
- 100m (std), 150m, 200m Supaslip 3/8" nylon hose
- Turbo 400 spray gun
- Hard powder coated finish
- Includes aerial springs, hour/rpm meter and units with tanks include total drain kit



Tank Size	Price
No Tank	\$9,243.00
600L	\$12,065.00
800L	\$12,269.00
1,000L	\$12,475.00
1,200L	\$ 12,725.00
1,500L	\$ 13,485.00
Twin 300L	\$ 17,123.00

### Intelli-Spray 9TDE Dual Reel Sprayer

- Honda GX270U 9 HP, electric start motor
- 12V battery charged by motor
- Bertolini PA730 triple diaphragm pump, direct coupled
- Maximum pressure of 580 PSI
- Maximum flow rate of 18.5 GPM
- Compact twin reel sprayer with remote control retraction
- 100m (std), 150m or 200m Supaslip 3/8" nylon hose
- 2x Turbo 400 spray guns
- Hard powder coated finish
- Includes aerial springs, hour/rpm meter and units with tanks include total drain kit



Tank Size	Price
No Tank	\$ 13,298.00
600L	\$16,690.00
800L	\$17,117.00
1000L	\$17,366.00
1500L	\$18,122.00
2000L	\$19,224.00
2500L	\$20,347.00

### Spray Max Evolution 160 Single and Twin Reels

- Single or Twin Reel Sprayer with Remote Control Retraction
- 5.5 HP Honda OHV motor, manual start
- 50M or 100M Supa-Slip 3/8" ID nylon hose
- Turbo 400 Spray Gun
- Powder coated reels
- Semitransparent UV stabilised tank
- Reduced spraying time with remote controlled retractable hose
- 50m (std), 100m Supaslip 3/8" nylon hose



Tank Size	Reel	Price
300L	1	\$9,367.00
400L	1	\$9,552.00
300L	2	\$11,659.00
400L	2	\$11,844.00

Pricing displayed for Intelli-Sprayers and Spray Max Sprayers reflect pricing with standard hose length only. Additional charges apply for longer hose lengths, available in the lengths indicated above.

### Radiarc Sprayer

- Precision boomless sprayer device, amounted to the side of a spray vehicle of your choice
- 5 different nozzle sizes available (.030; .045; .070; .085; .101) to apply volumes of 5 to 125 gal/acre and swath widths of 5 to 40 feet.
- Mount to spray vehicle using the stationary Swivel Mount Assembly, or the Vertical Actuator Assembly with 12 volt cylinder to adjust the spray head up or down and change the spray pattern on the fly.



#	Description	Price
20415	Spray Head	\$5,244.00
Various	Nozzle Set	\$278.00
20423	Plug Set	\$76.00
20467	Power Box	\$919.00
20316	12V Sol Viv	\$245.00
20438	Swivel Mount	\$268.00
20439	VA Assembly w/o motor	\$735.00
20432	VA Elec Motor	\$327.00

## PRO-TEC 325L ATV Utility Sprayers

### Gas Powered Sprayer Features

- Hose reel with 75' Kuri Tec 3/8" hose
- Convenient 15L tank to wash your hands
- Large 12" lid and 1" cam-lock inlet for easy filling
- Tank has chamfered corners to enhance circulation and sump to easily drain the tank
- Pro Max height adjustable, boomless nozzle assembly
- 35' spray width
- TeeJet 744 console with 344 pressure regulating valve
- DirectoValve 144P-3 solenoid valves
- GunJet 43L-AL6 22" adjustable spray pattern gun
- Powder coated steel components

### PRO-TEC 8580 Centrifugal Pump Option

#### 325-8580

- PRO-TEC 8580 high efficiency centrifugal pump
- Honda GXH50 2.1 HP, with manual start motor
- Maximum pressure of 85 PSI
- Maximum flow rate of 80 GPM

### Ace Centrifugal Pump Option

#### 325-660

- Ace GE-660 centrifugal pump
- Honda GX160 5.5 HP, with **manual** start motor
- Maximum pressure of 115 PSI
- Maximum flow rate of 100 GPM

### Ace Centrifugal Pump Option, Electric Start

#### 325-660E

- Ace GE-660E centrifugal pump
- Honda GX160 5.5 HP, with **electric** start motor
- Maximum pressure of 115 PSI
- Maximum flow rate of 110 GPM

### Adjust-A-Nozzle

The Adjust-A-Nozzle option from PRO-TEC Systems is a unique addition to your PRO-TEC sprayer. Compatible with either the 325L or 650L sprayer, it allows the user to electronically adjust the boom height from a cab operated switch. This changes the position of the Boom Buster nozzle, allowing the user to easily adapt to the contours of the right of way.

Can be ordered with a new unit or added onto an existing unit. Includes mounting bracket hardware, a 12V electric actuator, nozzle holder and switch.

### 12V Electric Sprayer Features

#### 325-ELEC

- High volume, 12V electric pump
- Maximum pressure of 45 PSI
- Maximum flow rate of 4.7 GPM
- Hose reel with 50' Kuri Tec 3/8" hose
- 30' spray width
- Nozzles adjustable to spray right, left, center or all
- Pump can be turned on/off using cab mounted switch
- GunJet 43L-AL6 22" spray gun



Model #	Price
325-ELEC	\$5,243.00
325-8580	\$7,304.00
325-660	\$7,448.00
325-660E	\$7,868.00
Upgrade Options	
TeeJet 430 Electric Ball Valve Assembly	Call
PRO-TEC GPS System	Call



Model #	Description	Price
ADJ-L	Left side, without nozzle	\$578.00
ADJ-R	Right side, without nozzle	\$578.00
ADJ-NOZ-L	Left side, with nozzle	\$820.00
ADJ-NOZ-R	Right side, with nozzle	\$820.00

# PRO-TEC 650L Skid Mount Sprayer

## PRO-TEC 8580 Centrifugal Pump Option

650-8580

- High efficiency PRO-TEC 8580 centrifugal pump
- Honda GXH50 2.1 HP, manual start motor
- Maximum pressure of 85 PSI and flow rate of 80 GPM
- GunJet 43L-AL6 22" spray gun

## Ace Centrifugal Pump Option

650-660

- Ace centrifugal GE660 pump
- Honda GX160 5.5 HP, **manual** start motor
- Maximum pressure of 115 PSI and flow rate of 110 GPM
- GunJet 43L-AL6 22" spray gun

## Ace Centrifugal Pump Option

650-660E

- Ace centrifugal GE660E pump
- Honda GX160 5.5 HP, **electric** start motor
- Maximum pressure of 115 PSI and flow rate of 110 GPM
- GunJet 43L-AL6 22" spray gun

## D30 Pump Option

650-D30

- Hypro D30 diaphragm pump + controls
- Honda 5.5 HP, manual start motor
- Maximum pressure of 115 PSI and flow rate of 110 GPM
- Hypro 3381-0010 17" spray gun

## D503 Pump Option

650-D503

- Hypro D503 diaphragm pump + controls
- Honda 9 HP, manual start motor
- Maximum pressure of 115 PSI and flow rate of 110 GPM
- Hypro 3381-0010 17" spray gun

# Hitch Receiver Boom Assembly

## Features:

- Easy Installation - slides into vehicle 2" hitch receiver, connect the hoses to the sprayer's plumbing system and you're ready to go
- Powder coated steel framework
- Adjustable boom spray height
- Up to 38' spraying width, using 2 wide angle center nozzles and a pair of low drift, Boom Buster end nozzles
- Wind shear / Nozzle protection guards included
- Standard nozzle configuration delivers 10 GPA at 30 PSI and 10 MPH
- Optional electronic package includes: cab controls consisting of 3-12 volt solenoid valves, mounting bracket, control box, wiring harness and cable extensions

## Features:

- 650L low profile tank with sloped bottom and sump
- Easy adjustment to change hose reel operating positions (passenger, driver or rear orientation)
- Powder coated metal skid equipped with integrated engine base and multi position hose reel base
- 1.5" suction valve and strainer assembly
- Bypass and agitation return line
- Hannay 1520-17-18 hose reel
- Kuri Tec 150' 1/2" hose



Model #	Price
650-8580	\$7,022.00
650-660	\$7,238.00
650-660E	\$7,658.00
650-D30	\$8,781.00
650-D503	\$9,443.00
Upgrade Options	
2nd Reel	Call
Electronic Rewind	Call



Model #	Price
HR-BM-NOZ	\$1,247.00
HR-BM-CONSOLE (electric)	\$2,250.00



## WorkHorse Sprayers

### WorkHorse 25G Deluxe Spot Sprayer

- 12V demand pump
- Maximum pressure of 60 PSI
- Maximum flow rate of 2.0 GPM
- Adjustable pressure range 0-60 PSI
- Boom Ready - add the 2 or 7 nozzle boom kit
- Pressure gauge
- 8' wiring harness with battery clips & switch
- Deluxe pistol grip handgun with adjustable brass tip
- 15' hose
- Inline shut-off for quick ON/OFF spraying



Model #	Price
WH-LG25DSS	\$310.00

### WorkHorse 25G Deluxe ATV Boomless Sprayer

- 12V demand pump
- Maximum pressure of 45 PSI
- Maximum flow rate of 4.0 GPM
- Adjustable pressure range 0-45 PSI
- Pressure gauge
- 24' spray width
- 8' wiring harness with battery clips & switch
- Handgun with adjustable pattern tip
- 15' hose
- Universal mounting brackets fit most ATV cargo racks
- Quick detach spray boom with 2-nozzle boomless tips
- Left and right shut off valves, adjusts to 3 heights



Model #	Price
WH-ATV25BL	\$585.00

### WorkHorse 40G Boomless UTV Skid MNT Sprayer

- 12V demand Power-Flo™ pump
- Maximum pressure of 45 PSI
- Maximum flow rate of 4.0 GPM
- Adjustable pressure range 0-45 PSI
- Pressure gauge
- 2-Nozzle boomless tip quick detach spray boom
- 24' spray width
- Deluxe pistol grip spray gun and adjustable brass tip
- 25' of hose
- Shut-off valves to spray left or right independently
- 8-Foot wiring harness w/ battery clips and ON/OFF switch



Model #	Price
WH-UTL40BL	\$845.00

### Kuri Tec Spray Hose

- Handles pressures up to 600 PSI @ 20°C
- Comes in 3/8" or 1/2" ID, in 300' lengths
- Ribbed cover for reduced drag and increased flexibility
- Light weight, easily coiled onto reels
- High quality PVC that is resistant to harsh chemicals



Model #	Size	Length	Price
K4131-06X300	3/8"	300'	\$300.00
K4131-08X300	1/2"	300'	\$430.40

### Supaslip Spray Hose

- Handles pressures up to 1,000 PSI
- Comes in 3/8" ID, in 100m, 150m and 200m lengths
- Light weight, easily coiled onto reels
- Extremely tough nylon hose with high abrasion and kink resistance
- Only to be used on **Intelli-Spray reels and sprayers**



Model #	Size	Length	Price
3296000	3/8"	100M	\$880.00
3297000	3/8"	150M	\$1,320.00
3298000	3/8"	200M	\$1,760.00

### QuikReel 50 (QR50)

- Single Reel with 12V 1/5 HP motor
- Remote control retractable
- 4m heavy duty cable to connect to vehicle battery
- 50m Supaslip 3/8" ID nylon hose
- Turbo 400 spray gun
- Hard powder coated finish



Model #	Size	Length	Price
QR50	3/8"	50M	\$3,300.00
QR50	3/8"	75M	\$3,508.00

### 12VS Reel

- Single Reel with 12V 1/3 HP motor
- Remote control retractable
- 4m heavy duty cable to connect to vehicle battery
- 100m Supaslip 3/8" ID nylon hose
- Turbo 400 spray gun
- Hard powder coated finish



Model #	Size	Length	Price
12VS	3/8"	100M	\$4,011.00
12VS	3/8"	150M	\$4,427.00

### Cox Manual and Electric Hose Reels

- Maximum pressure of 3,000 PSI
- Low profile outlet riser & open drum slot design for flat smooth hose wrap
- Permanently lubricated bearings for maintenance free and smooth rotation
- Adjustable tension brake
- Long-handled locking pin to lock reel in place during transportation



Model #	Hose Length Capacity (FT)			Hose Length Capacity (M)			Rewind Option	Price
	1/4" Hose	3/8" Hose	1/2" Hose	1/4" Hose	3/8" Hose	1/2" Hose		
1125-4-325	-	-	325	-	-	99	Manual	\$555.00
1125-4-325-E	-	-	325	-	-	99	Electric	\$1,060.00

### Hannay Hose Reel 1500 Series

- Maximum pressure of 3,000 PSI
- 90° ball bearing swivel joint with 1/2" female NPT inlet
- 1/2" female NPT outlet
- Cam-lock drag brake
- Spring actuated pin lock



Model #	Hose Length Capacity (FT)			Hose Length Capacity (M)			Rewind Option	Price
	1/4" Hose	3/8" Hose	1/2" Hose	1/4" Hose	3/8" Hose	1/2" Hose		
1514-17-18	175	125	75	53.3	38.1	22.9	Manual	Call
1520-17-18	350	275	175	106.7	83.8	53.3	Manual	\$621.40
1526-17-18	500	400	300	152.4	121.9	91.4	Manual	\$621.40
1520-17-18E	350	275	175	106.7	83.8	53.3	Electric	\$1,392.90
1526-17-18E	500	400	300	152.4	121.9	91.4	Electric	\$1,392.90

### HR Hose Reel

- Maximum pressure of 500 PSI
- 3/8" male NPT inlet
- 3/8" female NPT outlet
- Steel construction
- Sturdy design



Model #	Hose Length Capacity (FT)			Hose Length Capacity (M)			Rewind Option	Price
	1/4" Hose	3/8" Hose	1/2" Hose	1/4" Hose	3/8" Hose	1/2" Hose		
HR50N	-	50	-	-	15	-	Manual	\$105.30
HR100N	-	100	-	-	30	-	Manual	\$116.80
HR150N	-	150	-	-	45	-	Manual	\$151.70
HR200N	-	200	-	-	60	-	Manual	\$198.00

### Boom Buster Nozzles

All nozzles available in standard or right-of-way (R) forms. (R) nozzles spray beneath and just slightly behind the nozzle. Standard nozzles spray beneath and much further behind the nozzle to ensure overlap when 2 nozzles are mounted back to back.



## Nozzle Specs, Prices & Speed Chart

Model (pipe thread)	Eff Dist	PSI	LPM	Speed in kmph, Output in L/ha														
				3.2	4.8	6.4	8.0	9.7	11.3	12.9	14.5	16.1	17.7	19.3	20.9	22.5	24.1	
125 (1/4") \$142.00 ea	15.5 ft	30	6.4	252	168	121	103	84	73	65	56	47						
	17 ft	40	7.6	299	196	149	121	103	84	73	65	56						
140 (1/4") \$151.00 ea	16.5 ft	30	7.6	280	187	140	112	93	79	70	63	56	51	47	43	40	37	
	18 ft	40	9.1	336	224	168	131	112	93	84	75	65	61	56	51	48	45	
		50	10.2	383	252	187	149	131	112	93	84	75	69	63	58	54	50	
187(3/8") \$159.00 ea	18.5 ft	30	13.6	448	299	224	177	149	131	112	103	90	82	75	69	64	60	
	20 ft	40	16.3	542	355	271	215	177	149	131	121	112	103	90	83	77	72	
		50	18.2	598	401	299	243	196	168	149	131	121	112	103	93	86	80	
265 (1/2") \$176.00 ea	19.5 ft	30	25.7	803	542	401	327	271	233	205	177	159	149	131	121	112	103	
	21 ft	40	30.3	952	635	476	383	317	271	233	215	187	168	159	140	131	121	
120-3 (1/4") \$142.00 ea	3 ft	30	6.4	1307	878	654	523	439	373	327	289	261	233	215	205	187	177	
	3 ft	40	7.6	1541	1027	775	616	514	439	383	345	308	280	252	233	215	205	
		50	8.3	1690	1130	850	682	570	486	420	373	336	308	280	261	243	224	
120-5 (1/4") \$142.00 ea	5 ft	30	6.4	784	523	392	317	261	224	196	177	159	140	131	121	112	103	
	5 ft	40	7.6	924	616	467	373	308	261	233	205	187	168	159	140	131	121	
		50	8.3	1018	682	504	411	336	289	252	224	205	187	168	159	140	121	
180-6 (3/8") \$159.00 ea	6 ft	30	13.6	1382	924	691	551	467	392	345	308	280	252	233	215	196	187	
	6 ft	40	16.3	1653	1102	831	663	551	476	411	364	327	299	280	252	233	224	
		50	18.2	1849	1232	738	738	616	532	467	411	373	336	308	280	261	243	
180-10 (3/8") \$159.00 ea	10 ft	30	13.6	831	551	420	336	280	233	205	187	168	149	140	131	121	112	
	10 ft	40	16.3	990	663	495	401	327	280	252	224	196	177	168	149	140	131	
		50	18.2	1018	738	551	448	373	317	280	243	224	205	187	168	159	149	
260-11 (1/2") \$176.00 ea	11 ft	30	25.7	1428	952	719	570	476	411	355	317	289	261	243	224	205	187	
	11 ft	40	30.3	1681	1120	840	672	560	476	420	373	336	308	280	261	243	224	
		50	33.3	1849	1232	924	738	616	532	467	411	373	336	308	280	261	149	

## Nozzle Specs, Prices & Speed Charts

Model (pipe thread) Price	Eff Dist Net Dist	PSI	LPM	Speed in kmph, Output in L/ha													
				6.4	9.7	12.9	16.1	19.3	22.5	25.7	29.0	32.2	35.4	38.6	41.8	45.1	48.3
260-5 (1/2") \$157.00 ea	5 ft	30	25.7	1569	1046	784	626	523	448	392	345	317	289	261	243	224	205
	5 ft	40	30.2	1849	1232	924	738	616	532	467	411	373	336	308	280	261	243
		50	33.3	2035	1354	1018	812	682	579	504	448	411	373	336	308	289	271
370 (3/4") \$167.00 ea	10 ft	30	54.5	1662	1111	831	663	551	476	429	373	336	299	280	252	233	224
	10 ft	40	63.2	1933	1288	962	775	644	551	486	429	383	355	317	299	271	252
		50	71.2	2175	1074	1083	868	719	616	542	486	429	392	364	336	308	289
500 (1") \$203.00 ea	20 ft	30	110	1671	1120	840	672	560	476	420	373	336	308	280	261	243	224
	21.5 ft	40	125	1905	1270	952	766	635	542	476	420	383	345	224	289	271	252
		50	140	2138	1428	1064	850	710	607	532	476	429	383	355	327	308	280

## Nozzle Specs, Prices & Speed Charts

Model (pipe thread) Price	Eff Dist Net Dist	PSI	GPM	Speed in mph, output in g/acre													
				2	3	4	5	6	7	8	9	10	11	12	13	14	15
125 (1/4") \$142.00 ea	15.5 ft	30	1.7	27	18	14	11	9	8	7	6	5					
	17 ft	40	2.0	32	21	16	13	11	9	8	7	6					
140 (1/4") \$151.00 ea	16.5 ft	30	2.0	30	20	15	12	10	9	8	7	6	5.5	5	4.6	4.3	4
	18 ft	40	2.4	36	24	18	14	12	10	9	8	7	6.5	6	5.5	5.1	4.8
		50	2.7	41	27	20	16	14	12	10	9	8	7.4	6.8	6.2	5.8	5.4
187(3/8") \$159.00 ea	18.5 ft	30	3.6	48	32	24	19	16	14	12	11	10	9	8	7	6.9	6.4
	20 ft	40	4.3	58	38	29	23	19	16	14	13	12	10	10	9	8.2	7.7
		50	4.8	64	43	32	26	21	18	16	14	13	12	11	10	9.2	8.6
265 (1/2") \$176.00 ea	19.5 ft	30	6.8	86	58	43	35	29	25	22	19	17	16	14	13	12	12
	21 ft	40	8.0	102	68	51	41	34	29	25	23	20	18	17	16	15	14
		50	8.8	112	75	56	45	37	32	28	25	22	20	19	17	16	15
375 (3/4") \$186.00 ea	21.5 ft	30	14.4	166	111	83	66	55	47	41	37	33	30	28	26	24	22
	23 ft	40	16.7	192	128	96	77	64	55	48	43	38	35	32	30	27	26
		50	18.8	216	144	108	87	72	62	54	48	43	39	36	33	31	29
437 (3/4") \$195.00 ea	29.5 ft	30	18.5	155	103	78	62	52	44	39	34	31	28	26	24	22	21
	31 ft	40	21.5	180	120	90	72	60	52	45	40	36	33	30	28	26	24
		50	24.2	203	135	102	81	68	58	51	45	41	37	34	31	29	27

## Nozzle Specs, Prices & Speed Charts (continued)

Model (pipe thread) Price	Eff Dist Net Dist	PSI	GPM	Speed in mph, output in g/acre													
				2	3	4	5	6	7	8	9	10	11	12	13	14	15
120-3 (1/4") \$142.00 ea	3 ft	30	1.7	140	94	70	56	47	40	35	31	28	26	23	22	20	19
	3 ft	40	2.0	165	110	83	66	55	47	41	37	33	30	28	25	24	22
		50	2.2	182	121	91	73	61	52	45	40	36	33	30	28	26	24

120-5 (1/4") \$142.00 ea	5 ft	30	1.7	84	56	42	34	28	24	21	19	17	15	14	13	12	11
	5 ft	40	2.0	99	66	50	40	33	28	25	22	20	18	17	15	14	13
		50	2.2	109	73	54	44	36	31	27	24	22	20	18	17	16	15

180-6 (3/8") \$159.00 ea	6 ft	30	3.6	149	99	74	59	50	42	37	33	30	27	25	23	21	20
	6 ft	40	4.3	177	118	89	71	59	51	44	39	35	32	30	27	25	24
		50	4.8	198	132	99	79	66	57	50	44	40	36	33	30	28	26

180-10 (3/8") \$159.00 ea	10 ft	30	3.6	89	59	45	36	30	25	22	20	18	16	15	14	13	12
	10 ft	40	4.3	106	71	53	43	35	30	27	24	21	19	18	16	15	14
		50	4.8	119	79	59	48	40	34	30	26	24	22	20	18	17	16

260-11 (1/2") \$176.00 ea	11 ft	30	6.8	153	102	77	61	51	44	38	34	31	28	26	24	22	20
	11 ft	40	8.0	180	120	90	72	60	51	45	40	36	33	30	28	26	24
		50	8.8	198	132	99	79	66	57	50	44	40	36	33	30	28	26

Model (pipe thread) Price	Eff Dist Net Dist	PSI	GPM	Speed in mph, output in g/acre													
				4	6	8	10	12	14	16	18	20	22	24	26	28	30
260-5 (1/2") \$157.00 ea	5 ft	30	6.8	168	112	84	67	56	48	42	37	34	31	28	26	24	22
	5 ft	40	8.0	198	132	99	79	66	57	50	44	40	36	33	30	28	26
		50	8.8	218	145	109	87	73	62	54	48	44	40	36	34	31	29

370 (3/4") \$167.00 ea	10 ft	30	14.4	178	119	89	71	59	51	46	40	36	32	30	27	25	24
	10 ft	40	16.7	207	138	103	83	69	59	52	46	41	38	34	32	29	27
		50	18.8	233	155	116	93	77	66	58	52	46	42	39	36	33	31

500 (1") \$203.00 ea	20 ft	30	29	179	120	90	72	60	51	45	40	36	33	30	28	26	24
	21.5 ft	40	33	204	136	102	82	68	58	51	45	41	37	34	31	29	27
		50	37	229	153	114	91	76	65	57	51	46	41	38	35	33	30

Hypro Boom Xtender also available. Call for pricing.

Performance Chart for 3385 Nozzle with 3381-0010 spray gun

Model #	Orifice mm	PSI	200 PSI		350 PSI		500 PSI		600 PSI		650 PSI		700 PSI		850 PSI		Price
			Cone	Strght	Cone	Strght	Cone	Strght	Cone	Strght	Cone	Strght	Cone	Strght	Cone	Strght	
3385-1500	1.5	GPM	1.14	1.26	1.48	1.7	1.8	2	1.9	2.2	2	2.3	2.1	2.4	2.2	2.5	\$25.50
		throw (ft)	9.2	21.5	10.3	25.2	11.2	28	12.1	31.8	12.1	32	12.3	32.3	13.1	34.3	
3385-2300	2.3	GPM	2.1	2.7	2.7	3.7	3.4	4.5	3.8	4.9	3.8	5	3.9	5.1	4.2	5.8	\$26.20
		throw (ft)	11.4	29	12.9	33.9	14.8	37.9	16.6	41.5	17	41.7	17.7	42	19	45.7	
3385-3000	3	GPM	2.9	4.6	3.7	6.3	4.8	7.5	5.2	8.4	5.3	8.5	5.4	8.6	6	9.6	\$28.00
		throw (ft)	11.7	29.2	12.9	33.9	13.8	36.2	15.6	40.8	16	40.7	16.2	42	17	44.1	
3385-3500	3.5	GPM	5.8	6	7.9	8.2	9.6	9.9	10.7	11.1	11	11.3	11.2	11.6	12.4	12.8	\$30.10
		throw (ft)	13.6	36.2	19	41.2	22.6	45.3	25.5	50	25.5	51	27	51.5	28.8	54	
3385-4000	4	GPM	7	7.3	9.6	9.9	11.6	12	12.9	13.5	13.2	13.8	13.6	14.1	15	15.6	\$27.10
		throw (ft)	15.1	37.7	20.6	42.8	24.3	47	27.2	53	27.2	54	28.5	55	29	59	
3385-4500	4.5	GPM	8.2	8.9	11.1	12	13.4	14.5	15	16.3	15.4	16.6	15.7	17	17.4	18.9	\$27.10
		throw (ft)	18.1	39.2	22.2	44.3	26	50.1	30.6	54	30.6	56	31	57	31.5	62	
3385-5000	5	GPM	9.8	10.2	13.3	13.8	16	16.7	18	18.7	18.4	19.1	18.9	19.5	20.8	21.6	\$30.10
		throw (ft)	19.6	40.7	23.8	47	27.5	53.3	32.3	59	32.3	61	32.8	62	32.8	67	
3385-5500	5.5	GPM	10.7	11.5	14.4	15.6	17.4	18.8	19.6	21	20	21.5	20.4	22	22.6	24.4	\$30.10
		throw (ft)	19.6	42.2	23.8	50.7	29	57	34	63	34	64	34.5	65	34.5	70	
3385-6000	6	GPM	11.5	12.6	15.6	17.1	18.8	20.6	21	23.2	21.5	23.7	22	24.2	24.4	26.9	\$30.10
		throw (ft)	21.1	43.7	25.3	54	30.7	60	35.6	66	35.6	67	36	68	36	74	
3385-7000	7	GPM	11.5	13.5	15.6	18.4	18.8	22.2	21	25	21.5	25.4	22	26	24.4	29	\$30.10
		throw (ft)	21.1	46.8	25.3	57	30.7	63	37.4	70	37.4	71	38	72	38	77	

**Ace GE660 Pump**

- Honda GX160 5.5 HP, electric or manual start motor
- Maximum pressure of 115 PSI
- Maximum flow of 110 GPM
- 1-1/2" NPT inlet, 1-1/4" NPT outlet
- 6" impeller attaches directly to 3/4" keyed shaft
- Stainless steel shaft sleeve with o-ring leak protection
- All iron construction



Model #	Details	Price
GE660-LE	Pump without motor	\$795.00
GE660	Pump and motor with manual start	\$1,590.90
GE660E	Pump and motor with electric start	\$2,100.40

**Delavan 7870-101E Fatboy Pump**

- Self-priming diaphragm pump with 12V DC motor
- Maximum pressure: 60 PSI
- Maximum flow: 7 GPM
- 1/2" NPT female inlet/outlet ports
- 12" long 14 AWG leads
- Viton Valves
- Optional aluminum heatsink available to increase run-time and pump lifespan



Model #	Details	Price
7870-101E	Pump	\$359.80
50-125	Heatsink	\$30.00

### Flojet 12V Quad Demand Pump

- Self-priming diaphragm pump with AC electric motor
- Maximum pressure of 45 PSI
- Maximum flow of 4.7 GPM
- 3/4" inlet/outlet ports
- Chemical-resistant polypropylene pump head
- Optional pressure-control switch to run pump when needed



Model #	Details	Price
4300-143	Pump	\$322.30
20381-002	Two 1/2" port adaptors	\$11.10
02090-103	Pressure control switch	Call

### Hypro D30 Series

- Flanged shaft kit (D30); 3/4" hollow shaft for gas engine mount (D30GRGI(H))
- Diaphragms: 2, semi-hydraulic, Desmopan® standard, Buna available
- Epoxy-coated housing components for liquid handling
- Pump shaft rotation: CW and CCW



PSI	GPM	HP	GPM	HP	GPM	HP	GPM	HP	GPM	HP
	350 RPM		400 RPM		450 RPM		500 RPM		550 RPM	
0	6.1	0.13	6.9	0.16	7.8	0.19	8.7	0.24	9.6	0.28
145	5.7	0.55	6.6	0.66	7.2	0.76	8.1	0.85	9.3	0.90
290	5.6	1.00	6.3	1.14	7.1	1.29	7.8	1.47	8.8	1.64
465	5.5	1.46	5.9	1.67	6.9	1.89	7.7	2.06	8.6	2.27
580	5.2	1.90	5.8	2.11	6.8	2.41	7.5	2.71	8.3	2.94

Model #	Details	Price
9910-D30	Pump	\$908.40
9910-D30GRGI	Pump with gearbox and control unit	\$1,651.20
9910-D30GRGIH	Pump with gearbox, control unit and 5-1/2 HP Honda motor, manu start	\$2,190.20
9910-D30GRGIHE	Pump with gearbox, control unit and 5-1/2 HP Honda motor, elect start	Call

### Hypro D503 Series

- Flanged adapter shaft (D503); 1" hollow shaft (D503GRGI(H))
- Diaphragms: 2, semi-hydraulic, Desmopan® standard, Buna available
- Anodized aluminum housing
- Mounting base
- Pump shaft rotation: CW and CCW



PSI	GPM	HP	GPM	HP	GPM	HP	GPM	HP	GPM	HP
	350 RPM		400 RPM		450 RPM		500 RPM		550 RPM	
0	9.4	0.52	12.1	0.86	12.6	0.91	13.4	1.09	14.3	1.32
145	9.0	1.24	11.6	1.68	11.9	1.72	13.2	1.85	14.1	2.09
290	8.9	2.05	11.4	2.67	11.7	2.74	12.8	3.01	13.8	3.30
465	8.7	2.78	11.3	3.72	11.6	3.90	12.6	4.14	13.6	4.41
580	8.5	3.56	11.0	4.67	11.4	4.83	12.2	5.37	13.4	5.49

Model #	Details	Price
9910-D503	Pump	\$1,286.20
9910-D503GRGI	Pump with gearbox and control unit	\$2,181.10
9910-D530GRGIH	Pump with gearbox, control unit and 9 HP Honda motor, manual start	\$3,131.60

All HP requirements listed in the Hypro tables above are electrical. For approximate gas equivalent, multiply by 1.3  
 Ask for an electric start motor, at an additional charge.



### HyproD813 Series

- Flanged shaft adapter and 1-3/8"- 6 splined male shaft extension (D813); 1" hollow shaft for gas engine mount (D813GRGI)
- Diaphragms: 3, semi-hydraulic, Desmopan® standard Buna available
- Anodized aluminum housing
- Mounting base
- Pump shaft rotation: CW and CCW



PSI	GPM	HP	GPM	HP	GPM	HP	GPM	HP	GPM	HP
	350 RPM		400 RPM		450 RPM		500 RPM		550 RPM	
0	14.7	0.41	17.0	0.64	18.2	0.74	19.8	0.93	20.8	1.12
217	13.9	2.33	16.1	2.51	17.8	2.93	19.5	3.40	19.9	3.61
435	13.6	4.06	15.6	4.65	17.4	5.26	19.1	5.80	19.7	6.23
580	13.5	5.22	15.3	6.03	17.2	6.81	18.4	7.51	19.2	8.01
725	13.4	6.30	15.0	7.31	16.9	8.33	17.9	9.23	19.0	9.82

Model #	Details	Price
9910-D813	Pump	\$1,652.90
9910-D813GRGI	Pump with gearbox and control unit	\$2,823.00

All HP requirements listed in the tables above are electrical. For approximate gas equivalent, multiply by 1.3  
 Ask for an electric start motor, at an additional charge.

### Hypro Gas Engine Driven Pump

- Honda 5.5hp, with manual start motor
- Maximum pressure of 80 PSI
- Maximum flow of 110 GPM
- 1-1/2" NPT inlet, 1-1/4" NPT outlet
- Cast iron housing
- Nylon impeller
- Viton/ceramic seals
- Update to Life Guard Seals for increased dry-run and abrasive resistance



PSI	10	20	30	40	50	60	70
GPM	110	106	96	88	80	60	30

Model #	Details	Price
1537	Pump, motor and mounting base	\$1,434.00
1538	Pump without motor	\$605.40
3430-0332	Seal and o-ring repair kit	Call
3420-0589	Life Guard silicon carbide seal kit	Call

### PRO-TEC Pump

- Honda GXH50 2.5 HP, manual start motor
- Maximum pressure of 85 PSI
- Maximum flow of 80 GPM
- 1-1/2" NPSH inlet, 1-1/2" NPSH outlet
- Small and lightweight



PSI	25	50	75
GPM	68	42	12

Model #	Details	Price
8580	Pump & motor	\$1,503.00

### TeeJet 744A Spray Controller with 3 Valves

The 744A sprayer controller provides manual spray control in a convenient compact package with a 100 PSI or 300 PSI gauge.

**Features**

- Back lit pressure gauge for ease of use in low light conditions
- Heavy-duty switches with LED operating indicators
- Available in a variety of kit forms using solenoid or ball type control valves



	744A 3-Switch		Boom Valve Harness		Boom Valves			Regulating Valves			Pricing
	100 PSI	300 PSI	Solenoid	Ball Valve	None	144A-3	144P-3	244C Butterfly	3/4" BPR Valve	1" BRL Valve	
744A Kit Part #	75-50033	75-50035	45-20090 45-20091 45-20100	45-05385 45-10072 45-10080		35-50023 AA144A-3	35-50027 AA144P-3	35-50029	35-02115	35-02087	
90-50149	x		x		x						\$450.90
90-02439	x			x	x						Call
90-50151		x		x	x						Call
90-02580	x			x	x					x	Call
90-02579		x		x	x					x	Call
90-50161	x		x		x			x			Call
90-50163	x		x			x		x			\$803.50
90-50177	x		x				x	x			\$1,090.90
90-50238	x			x	x				x		Call
90-50237		x		x	x				x		Call

### TeeJet 744E Spray Controller

The 744E sprayer controller is a great option to convert sprayers from manual valves to electric ball valves. Pair up with the TeeJet 430 ball valve manifold (ordered separately) to equip yourself for another successful productive season.

**Features**

- Back lit pressure gauge for ease of use in low light conditions
- Dual scale, 100 PSI pressure gauge
- 3 or 5 heavy duty switches with LED indication of active boom sections



Model #	Details	Price
90-50254	TeeJet 744E console with 3 sections	\$749.20
90-50255	TeeJet 744E console with 5 sections	\$873.60

### GunJet AA30L

- Maximum pressure of 250 PSI
- Maximum flow of 5 GPM
- 1/4" NPT female inlet
- Body and trigger molded Nylon
- Drip-free shutoff immediately behind spray tip
- Accommodates all interchangeable TeeJet spray tips



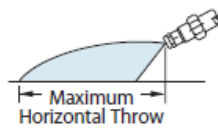
Model #	Details	Price
AA(B)30L-1/4	No Extension	\$85.30
AA(B)30L-22425-8	8" Extension	Call
AA(B)30L-22425-18	18" Extension	\$142.00
AA(B)30L-22425-24	24" Extension	\$151.60
AA(B)30L-22425-36	36" Extension	\$171.00

### GunJet AA43

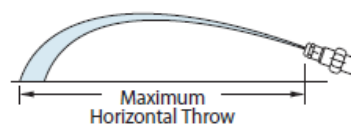
- Drip free shut off and instant operating response
- Heavy duty aluminum construction
- Convenient trigger-lock for continuous spraying
- 1/2" NPT female inlet
- Interchangeable orifice, to modify performance
- Can modify spray pattern to get a wide angle cone or straight stream



**SETTING "A"**  
WIDE ANGLE CONE SPRAY



**SETTING "C"**  
STRAIGHT STREAM SPRAY



Model #	Orifice Disc Number	Performance	Liquid Pressure in PSI									
			40 PSI		100 PSI		200 PSI		400 PSI		800 PSI	
			A	C	A	C	A	C	A	C	A	C
AA(B)43L-AL2 AA(B)43H-AL2	D2	Capacity - GPM	0.29	0.30	0.45	0.47	0.64	0.66	0.90	0.94	1.30	1.30
		Max. Vert. Throw-ft	-	22	-	22	-	23	-	24	-	26
		Max Hor. Throw-ft	10	32	10	33	10	34	10.5	35	11	35
AA(B)43L-AL4 AA(B)43H-AL4	D4	Capacity - GPM	0.60	0.61	0.92	0.94	1.30	1.30	1.80	1.90	2.6	2.7
		Max. Vert. Throw-ft	-	26	-	27	-	28	-	30	-	32
		Max Hor. Throw-ft	10	36	10	36	10.5	37	11	39	11	40
AA(B)43L-AL6 AA(B)43H-AL6	D6	Capacity - GPM	1.20	1.3	1.9	2.0	2.7	2.9	3.8	4.1	5.3	5.8
		Max. Vert. Throw-ft	-	31.5	-	33	-	34.5	-	36.5	-	38
		Max Hor. Throw-ft	10	44	10	45	10.5	46	11	48	11	50
AA(B)43L-AL8 AA(B)43H-AL8	D8	Capacity - GPM	2.0	2.5	3.1	3.4	4.4	4.8	6.2	6.8	8.8	9.6
		Max. Vert. Throw-ft	-	33	-	35.5	-	38	-	40.5	-	42
		Max Hor. Throw-ft	10	45	10	46	10.5	47	11	49	11	51
AA(B)43L-AL10 AA(B)43H-AL10	D10	Capacity - GPM	2.6	3.2	4.1	5.0	5.8	7.1	8.2	10	10.2	14.1
		Max. Vert. Throw-ft	-	35	-	37.5	-	40	-	42.5	-	44.5
		Max Hor. Throw-ft	10	46	10.5	49	11	50	11.5	52	12	54

Model #	Operating Pressure	Length	Price
AA(B)43LA-AL#	Up to 200	13"	\$185.50
AA(B)43HA-AL#	200-800	13"	Call
AA(B)43L-AL#	Up to 200	22"	\$185.50
AA(B)43H-AL#	200-800	22"	\$187.00

Replace the '#' with the orifice size you need when ordering

### Hypro Adjustable Pattern Spray Guns

- Maximum operating pressure of 1,200 PSI
- Maximum flow of 25 GPM
- 1/2" NPT male inlet
- Long range capability
- Ideal for tree and brush spraying
- Adjustable pattern, from stream to cone
- 17" extension
- Ships with 3385-3000 nozzle with 3mm orifice



See page 15 to match the right nozzle for your needs

Model #	Details	Price
3381-0010	Adjustable Pattern Spray Gun	\$304.70
9920-KIT10/11	Repair Kit	\$48.00
9920-248	Swivel Kit	\$39.40

### Intelli-Spray Turbo 400 Spray Gun

- Maximum operating pressure of 700 PSI
- Maximum flow of 13 GPM
- Metal Handle and trigger guard
- Swivel included, which reduces hose tangles and operator fatigue
- Adjustable spray nozzle



Orifice (mm)	Performance	200 PSI		350 PSI		500 PSI		600 PSI		650 PSI		700 PSI		Price
		cone	strght	cone	strght	cone	strght	cone	strght	cone	strght	cone	strght	
2.0	GPM	1.82	2.32	2.14	3.09	2.69	3.54	2.88	3.78	3.09	4.02	3.30	4.17	\$193.50
	max throw (ft)	11.48	27.89	12.47	31.17	13.12	34.45	14.11	36.09	15.09	37.73	15.75	39.37	
3.0	GPM	3.04	4.86	3.80	6.37	4.76	7.45	4.97	7.95	5.18	8.32	5.52	8.72	\$193.50
	max throw (ft)	12.47	31.17	13.12	34.45	13.78	36.09	14.76	38.71	15.75	40.03	16.40	42.65	

Indicate Orifice size at time of order.

### TeeJet Lawn Spray Guns

- Maximum operating pressure of 200 PSI
- Maximum flow of 6.4 GPM
- 3/4" NPT female inlet
- Interchangeable nozzle tips are color coded
- 45° full cone nozzle tips
- Continuously spray at ease with the trigger lock



Model #	Description	Capacity (GPM) at various pressures and nozzles							Price
		2 PSI	4 PSI	6 PSI	8 PSI	10 PSI	15 PSI	20 PSI	
25660-1.5	Gun + 1.5GPM nozzle	1.4	1.9	2.3	2.6	2.9	3.4	4.0	\$102.40
25660-3.0	Gun + 3.0GPM Nozzle	2.0	2.7	3.2	3.6	4.1	4.9	5.6	\$102.40
25660-4.0	Gun + 4.0GPM Nozzle	2.3	3.1	3.7	4.3	4.7	5.6	6.4	\$102.40
25990	Swivel								Call
25657-NYB	Adapter								Call
22665	Extension Wand								Call
CP2264-PP	Straight Adapter								Call
CP22673-PP	45° Adapter								Call
CP25670-1.5-NY	1.5 GPM Nozzle	1.4	1.9	2.3	2.6	2.9	3.4	4.0	Call
CP25670-3.0-NYB	3.0 GPM Nozzle	2.0	2.7	3.2	3.6	4.1	4.9	5.6	Call
CP25670-4.0-NY	4.0 GPM Nozzle	2.3	3.1	3.7	4.3	4.7	5.6	6.4	Call



### DirectoValve 2-way Electrically Operated Solenoid Valves

- Operate on a 12V DC system
- Maximum pressure of 100 PSI
- Encapsulated solenoid coil can be changed without removing valve from system

### DirectoValve 144P

- 10 GPM at 5 PSI pressure drop, 14 GPM at 10 PSI pressure drop
- 3/4" inlet, 1/2" outlet
- 2.5 amp current draw
- Polypropylene body
- Fabric reinforced Viton diaphragms and seat washers
- Corrosion resistant, 430SS solenoid grad armature and armature stop
- Encapsulated coil and magnetic circuit



Model #	Details	Price
AA(B)144P-1	Single Valve	\$269.80
AA(B)144P-2	Double Valve	Call
AA(B)144P-3	Triple Valve	\$881.00

### DirectoValve 144A

- 10 GPM at 5 PSI pressure drop, 14 GPM at 10 PSI pressure drop
- 3/4" inlet, 1/2" outlet
- 2.5 amp current draw
- Polypropylene body
- Fabric reinforced diaphragms



Model #	Details	Price
AA(B)144A-1	Single Valve	\$195.80
AA(B)144A-2	Double Valve	Call
AA(B)144A-3	Triple Valve	\$597.40

### DirectoValve 145H

- 15 GPM at 5 PSI pressure drop, 21 GPM at 10 PSI pressure drop
- 1" inlet, 1" outlet
- 2.9A current draw
- Fiberglass reinforced Nylon body



Model #	Details	Price
AA145H-1	Single Valve	\$448.20

### EZ-Ject Herbicide System

- Effective way to control unwanted woody growth in ecologically sensitive areas
- Herbicide is absorbed into the tree, killing tree in 6 months
- Fully loaded lance weighs less than 10 lbs
- Gravity fed, spring-loaded head injects capsule through bark with minimal effort
- One capsule is needed for every 2-3 inches in circumference
- Find a overview video [here](#), and a instructional video [here](#)



Model #	Details	Price
Short Lance	41.25" long, 228 capsule capacity	\$830.00
Long Lance	63.5" long, 400 capsule capacity	\$830.00
EZ-Ject Capsule	4x1200 capsule	\$1,735.00

### Surge Buster Small

- Slows the movement of liquid in tanks, reducing roll over risk
- Makes vehicles with a partial loaded easier to handle
- Easy to assemble and place in any tank
- View the demonstration video [here](#)



Model #	Details	QTY	Price
SB 807	Surge Buster	1	\$38.00
SB 807	Surge Buster (25/case)	25 or more	\$33.00

### Wick Applicator

- Herbicide applicator without any drift. Drastically reduces the risk of killing non-target vegetation
- Cleans fence rows
- Kills target weed in row crops
- Easy to use
- 2.5 lbs when filled



Model #	Details	Price
Wick Applicator	Wick Applicator	\$44.00

### Wind Meter

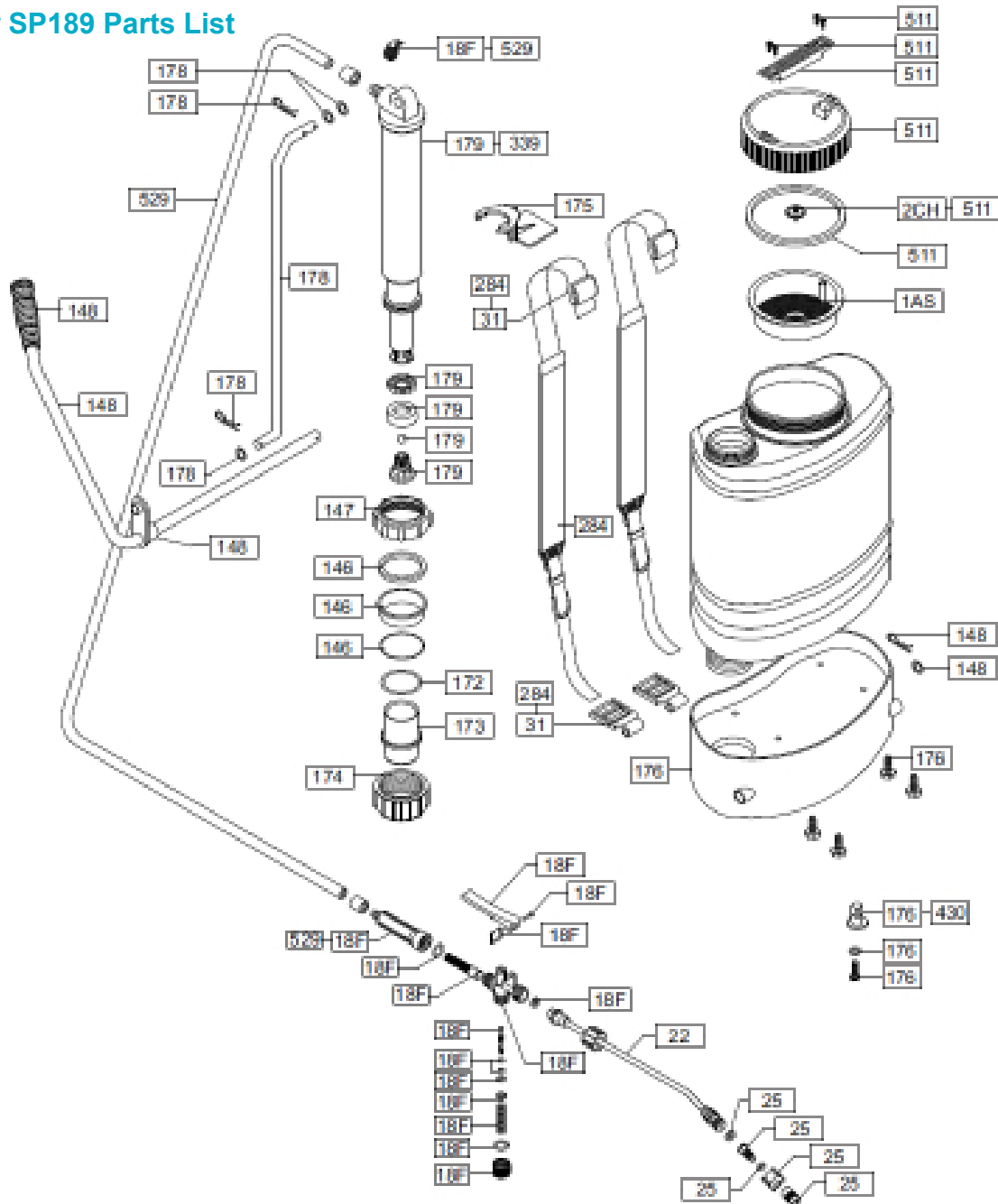
Accurate record keeping becomes a more important part of our customers business every year. By using this accurate USA-made piece of technology, you will improve your efficiency leaving more time to get the job done! This tool records the following environmental conditions:

- Wind Speed and direction
- Temperature
- Relative Humidity
- Dew Point
- Delta T
- Comfort Index
- Digital Compass
- Displays Current, maximum and average wind speeds



Model #	Details	Qty	Price
WM-300	Wind Meter	1	\$219.00
WM-300	Wind Meter	3 or more	\$209.00
Impeller	Wind Mate replacement impeller	1	\$17.90

YardTender SP189 Parts List



Part#	Description	Price	Part#	Description	Price
KIT2A	Seal for 6" lid	\$13.70	KIT174	Holding cap for cylinder	\$18.05
KIT2CH	Check valve for lid	\$6.90	KIT175	Agitator	\$11.80
KIT18F	Complete spray gun	\$76.30	KIT176	Complete base	\$73.00
KIT22	20" brass spray wand	\$54.20	KIT178	Metal pump leaver & lock pins	\$77.00
KIT25	Adjustable brass nozzle with holder	\$48.30	KIT179	Complete pump module assembly	\$116.90
KIT31	Shoulder strap clip	\$8.60	KIT284	Two heavy padded adjustable shoulder straps with hooks	\$72.30
KIT146	Nylon guide, fabric seal, & o-ring	\$15.90	KIT331	Screw set for base	\$2.20
KIT147	Threaded holder for pump unit	\$6.78	KIT339	Pumping tube	\$57.23
KIT148	Metal pump handle & grip	\$54.15	KIT430	Plastic nut & base	\$9.50
KIT172	O-ring for cylinder	\$4.20	KIT511	Lid with carrying handle	\$26.60
KIT173	Cylinder	\$33.90	KIT529	Hose set	\$52.00

# Terms and Conditions

## EFFECTIVE DATE AND DISCLAIMER

Pricing effective as of issue date indicated on cover page and supersedes all previous published pricing. All pricing and promotions subject to change without notice. Not all products available at all locations, see shipping policy for terms. All sales are subject to Univar standard terms and conditions found [here](#).

## STANDARD PAYMENT TERMS

Standard payment terms are **NET 30** days from invoice issue date. Credit will be extended only to customers who are approved by the Univar Credit Department. Those not approved for credit must make payment prior to product transfer. Univar has the right to reasonably reject any order. Past due accounts are subject to a service charge of 1.5% per month, (18.0% per annum). Service charges are subject to change upon proper notification.

## PAYMENT OPTIONS

Online or Telephone Banking

Pay to: Univar Canada

Email remittances to: [payments@univar.com](mailto:payments@univar.com) Or fax remittances to: (604) 273-2046

Participating Banks: TD Canada Trust, CIBC, Bank of Montreal, Citizens Bank, Most Credit Unions, RBC, Scotia Bank, Canadian Western Bank, Laurentian Bank of Canada

### Send EFT or Wire Transfer Information

Institution: 001                      Transit: 00040  
 Account: 1669325                      SWIFT: BOFMCAM2  
 BMO Bank of Montreal  
 595 Burrard Street  
 Vancouver, BC V7X 1L7 Canada

### Mailing Address for Cheques

Univar Canada Ltd.  
 PO Box 2536, Station M  
 Calgary, AB T2P 0V9

## CREDIT CARD PAYMENTS

Univar will accept Visa and MasterCard payments at time of purchase only. Service charges of 2% will apply if annual credit card payments exceed \$25,000.

## ORDER REQUIREMENTS

Minimum order size accepted is \$75.00. All products will be sold in case lots only, unless specifically indicated otherwise. Surcharge may be charged on any orders of products in less than case lots, and may be available for customer pickups only. Contact a Univar representative for more details.

## TAX POLICY

Customers must agree to pay GST and provincial taxes as applicable. In provinces under the HST system, customers will pay full HST on all applicable products. In provinces with separate GST + PST system, GST will not be charged on GST exempt products and services.



# Terms and Conditions Continued

## SHIPPING POLICY & SERVICE GUIDELINES

1. Chemical shipments over \$10,000.00 (before tax) will be prepaid to most pre-determined destinations, subject to the approval of a Univar Representative, on a carrier of Univar's choice.
2. Orders placed after 11:00am local time requesting next day delivery, may be subject to a \$25.00 fee. Univar representatives will attempt to get the orders shipped for next day delivery when requested but we cannot guarantee this service if orders are submitted after 11:00am. Expedited orders may incur additional freight charges, these charges will be the sole responsibility of the customer.
3. Equipment orders are not prepaid, unless purchased with chemical sales over \$10,000.00 (before tax) and authorized by a Univar representative.

## PICKUP POLICY & SERVICE GUIDELINES

1. Univar will only load product onto vehicles that Univar deems safe. Univar reserves the right to refuse any pick-ups, if a vehicle cannot safely transport due to, but not limited to, the following reasons:
  - a. Ordered product weight exceeds vehicle payload
  - b. Vehicle cannot properly display TDG placards, in cases that require it
  - c. Vehicle is unfit for heavy loads
2. Product will be stored and readily available at the following 5 warehouses and can be picked up 3 hours after placing an order, subject to product availability. Please note that our warehouses are open 8:00-4:30 and are closed for lunch during the hours of 12:00-1:00pm.
 

a. Abbotsford, BC	3256 McCallum Road	Chemical only
b. Airdrie, AB	35 East Lake Circle NE	Chemical and equipment
c. Saskatoon, SK	4115 Thatcher Ave	Chemical only
d. Tillsonburg, ON	291 Tillson Avenue	Chemical and limited equipment selection
e. Winnipeg, MB	169 Lowson Crescent	Chemical only
3. Product is not regularly stocked at the following five locations, but Univar can ship chemical orders over \$5,000.00 (before tax) with prepaid freight to these locations for pick-ups. Orders would be available for pick-up 1-2 business days after the order is issued to a Univar representative. Customers must pick-up orders within 24 hours of being notified of an orders delivery or additional charges may apply.
 

a. Blackfalds, AB	27323 - 24 TWP RD. 394
b. Brandon, MB	1875 Middleton Avenue
c. Coaldale, AB	1204-18 Avenue
d. Cookshire, QC	1025 Pope Street
e. Regina, SK	284 Mill Street

## RETURN POLICY

All equipment sales are considered final and are not subject to return. Under special circumstances where a return is warranted it must be first authorized by a Univar Sales Representative. Univar reserves the right to assess a 10% restocking charge on returned goods. Freight on returned product will be the responsibility of the customer.

© 2017. Univar Canada Ltd. All rights reserved. UNIVAR, the hexagon, and other identified trademarks are the property of Univar Inc., Univar Canada Ltd. or affiliated companies. All other trademarks not owned by Univar Inc., Univar Canada Ltd. or affiliated companies that appear in this material are the property of their respective owners. Univar makes no representations and warranties as to the statements of third party producers or manufacturers included in this material. All offers and prices expressed are subject to change without notice. Valid for Canadian end use customers only. Offers expire October 31st 2017 unless otherwise stated. Always read and follow label directions.